



**MONTHLY PROGRESS REPORT AUGUST 2018**  
**FORUM FOOTPRINTS, BALLYGUNGE, KOLKATA**  
**DATE: 31.08.2018**



<b>PROJECT:</b>	<b>FORUM FOOTPRINTS, KOLKATA</b>	<b>MONTHLY REPORT</b>	<b>DATE:</b>	<b>31/08/2018</b>
			<b>REPORT No:</b>	<b>19</b>

**A. SUMMARY OF WORK (AUGUST 2018)**

**Tower Area**

- 7<sup>th</sup> floor full casted including fire refuge platform
- 8<sup>th</sup> floor full casted

**B. PROGRAMME – (Activity Impact / Effect & Mitigation)**

<b>FORUM FOOTPRINTS</b>	<b>Project Commencement Date – 01.02.17</b> <b>Schedule Completion – 31.08.19</b> <b>Revised Completion – 29.02.20</b>
-------------------------	--

As per attached "Execution Plan Tracking-31-08-2018"

**C. ADDITIONAL COMMENTS/CONCERNS FOR REPORT**

No.	Activity Description:	Level of Concern (High/Med/Low)	Mitigating Action
1	Revised work order for civil work need to be issued	H	
2	Work order for rebar grouting to be issued	H	
3	Plumbing Contractor to be appointed	H	
4	Fire fighting Contractor to be appointed	H	
5	Water proofing Contractor to be appointed	H	



E.	LABOUR AND STAFF RECORD AND CHANGES
----	-------------------------------------

No	Resource Description	Planned Resources	Level at end of month	Increase in Lab/Plant/Staff
1	Sinha Projects Pvt Ltd - Workers	1764	1515	-249
2	JD Electricals	24	33	+9
3	Forum Staffs + casuals	220	201	-19
4	Sinha Projects Pvt Ltd – Staffs	168	178	+10
<b>TOTALS</b>		<b>2176</b>	<b>1927</b>	<b>-249</b>

I.	QUALITY
----	---------

No.	Description:	Comments:
1	Cube test reports received	Result satisfactory
2	NCR issued to SPPL – NIL for this month	



L.	DRAWINGS RECEIVED IN THIS MONTH
----	---------------------------------

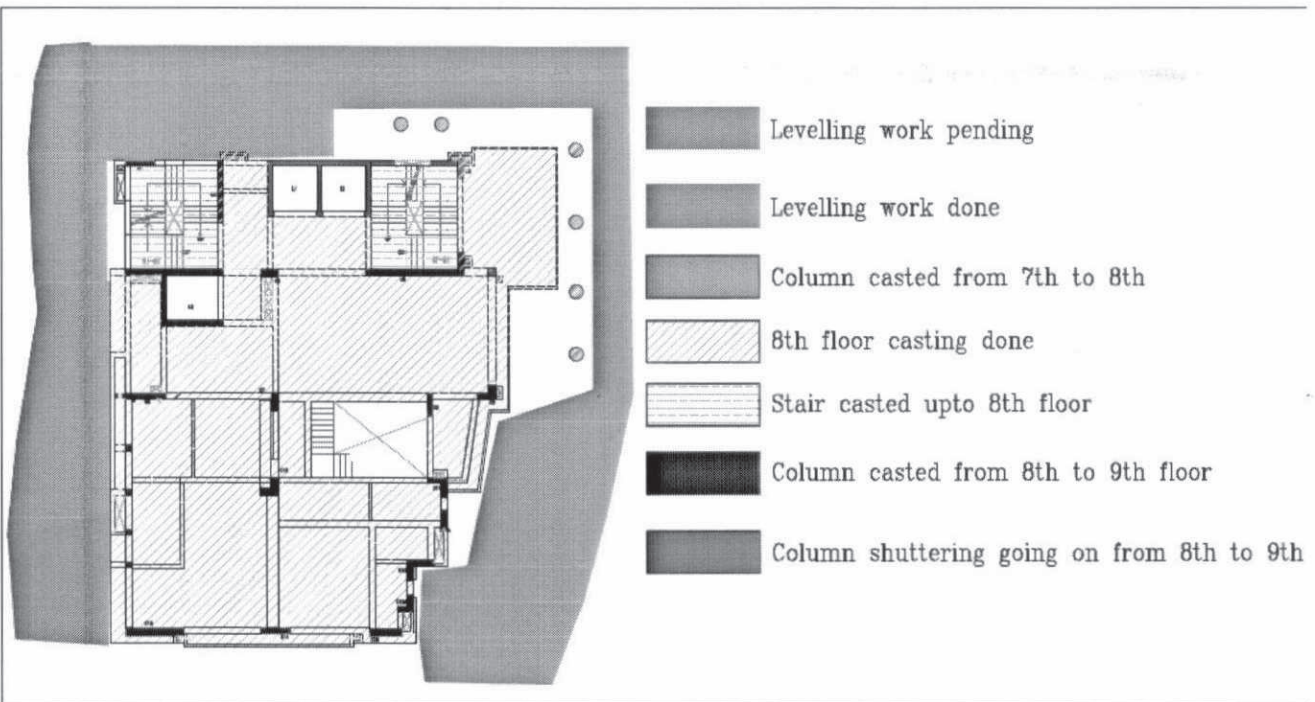
Document Number	Document Description	Rev	Doc Status	Discipline	Received Date
D-2.3	Duplex Stair Detail ( 7th to 8th Floor)	0	GFC	Architectural	24-Aug-18
D-2.4	Duplex Stair Detail ( 9th to 10th Floor)	0	GFC	Architectural	28-Aug-18
D-6.1	2nd Floor Projection Plan	2	GFC	Architectural	24-Aug-18
D-6.2	Typical 3rd to 6th Floor Projection Plan	1	GFC	Architectural	24-Aug-18
D-6.3	7th Floor Projection Plan (Duplex - Level-1)	1	GFC	Architectural	24-Aug-18
D-6.4	8th Floor Projection Plan (Duplex-LVL.2)	1	GFC	Architectural	24-Aug-18
D-6.5	9th Floor Projection Plan (Duplex - Level-1)	1	GFC	Architectural	24-Aug-18
D-6.6	10th Floor Projection Plan (Duplex - Level-2)	1	GFC	Architectural	24-Aug-18
D-6.7	11th Floor Projection Plan (Duplex-Level-1)	1	GFC	Architectural	24-Aug-18
D-6.8	11th Floor Level Projection Plan (Duplex - Level-1)	1	GFC	Architectural	24-Aug-18
SIEC/FORUM/_RESI/TYPE_F/ELV LAYOUT	ELV Layout of Typical Floor(2nd to 6th Floor)	0	GFC	Electrical	14-Aug-18
SIE/FORUM/_RESI/7TH_F/ELV LAYOUT	ELV Layout of 7th Floor (Duplex Lower)	0	GFC	Electrical	14-Aug-18
SIEC/FORUM/_RESI/8TH_F/ELEC LAYOUT	Electrical Layout of 8th Floor(Duplex Upper)	1	GFC	Electrical	14-Aug-18
SIEC/FORUM/_RESI/8TH_F/ELV LAYOUT	ELV Layout of 8th Floor(Duplex Upper)	1	GFC	Electrical	14-Aug-18
SIEC/FORUM/_RESI/TYP_F/ELEC 3	Electrical Layout of Typical Floor(2nd to 6th Floor)	1	GFC	Electrical	04-Aug-18





K. KEY ACTIVITIES SITE PLAN

Work done till 31.08.2018



L. PROGRESS PHOTOGRAPHS

Front Elevation



7<sup>th</sup> Floor Slab Reinforcement works

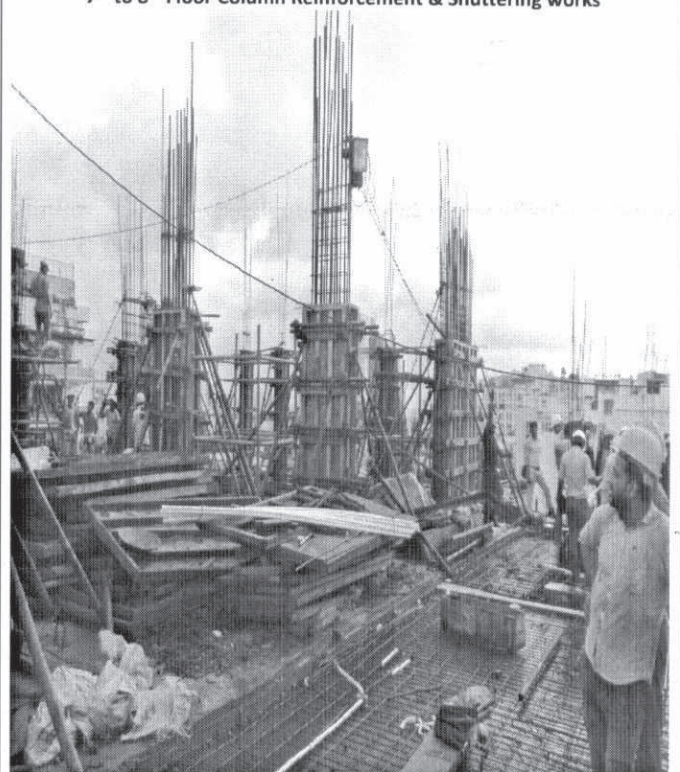




7<sup>th</sup> Floor Slab casting works going on



7<sup>th</sup> to 8<sup>th</sup> Floor Column Reinforcement & Shuttering works





8<sup>th</sup> Floor Slab part 1 Reinforcement works going on

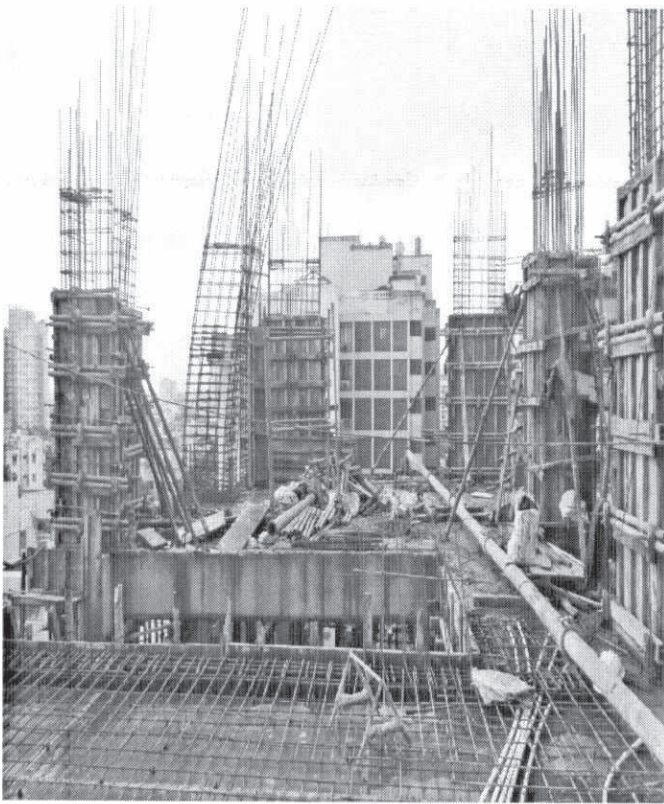


8<sup>th</sup> Floor Slab Part-1 casting works going on





8<sup>th</sup> to 9<sup>th</sup> Floor Column Reinforcement & Shuttering works



8<sup>th</sup> Floor Slab Part-2 casting works going on

